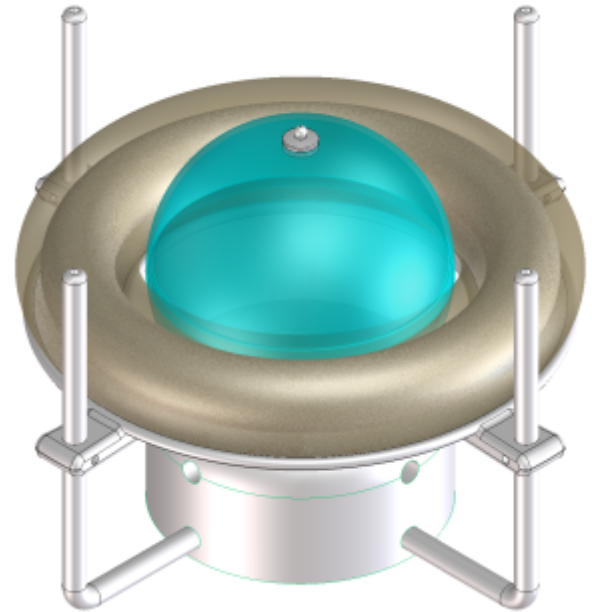


Plasmatic implosion reactor (PIR) 1



First version of our [implosion reactor](#) is planned as spherical chamber with magnetic fluid which is driven by an external motor in



form of rotating pulse magnetic field from toroidal coil.

Temperature sensors, magnetic field and voltmeters inside the chamber will enable monitoring of current conditions along with cameras. Everything will be controlled by our [SenseLab](#) software.

Main thought is that we will create pulsing whirlpool in magnetic fluid inside the chamber. That is what will be coil with pulse rotating magnetic field used for. When the frequency of the pulses will be the same as frequency of etheric flows (sub-atomic whirling particles) nearby, then the flows (particles) will be attracted and centered or impeded in reactor's vortex for further use in real life:

As a source of energetic materials, energy and eternal drive, beneficial effect on health, etc.

Research of fluidal implosion, including ether (primeval substance)...

As Mr. Tesla said if aether has dynamic character, then there is a chance to use its energy.

And for me it is, that this aether, primeval substance, quantum vacuum, akáša, prána, ód, orgon, ... is dynamic and its movement can be concentrated for further use...

Zapojení lidé

-  [Marek Ištvané](#)

- [Design of PIR 1](#)
- [Development of PIR 1](#)